

FOR LEASE/SALE

GREY OAKS

K-7 & Johnson Drive
Shawnee, Kansas



SITE SUMMARY

- Small Shops Coming Soon, 1,400+ SF
- Join Walmart, CVS, AutoZone and Dutch Bros
- High Growth Area
- Great Visibility & Access to K-7



Bryan Jantsch
bjantsch@rhjohnson.com | 816.268.2455

4520 Madison Avenue, Suite 300 • Kansas City, MO 64111 • 816.561.5111 • rhjohnson.com

While this information is deemed correct, no representation is made as to the accuracy thereof. This information is subject to errors, omissions and change of terms at any time. The property may be withdrawn from the market without notice.

Summary Profile

2010-2020 Census, 2025 Estimates with 2030 Projections
 Calculated using Weighted Block Centroid from Block Groups

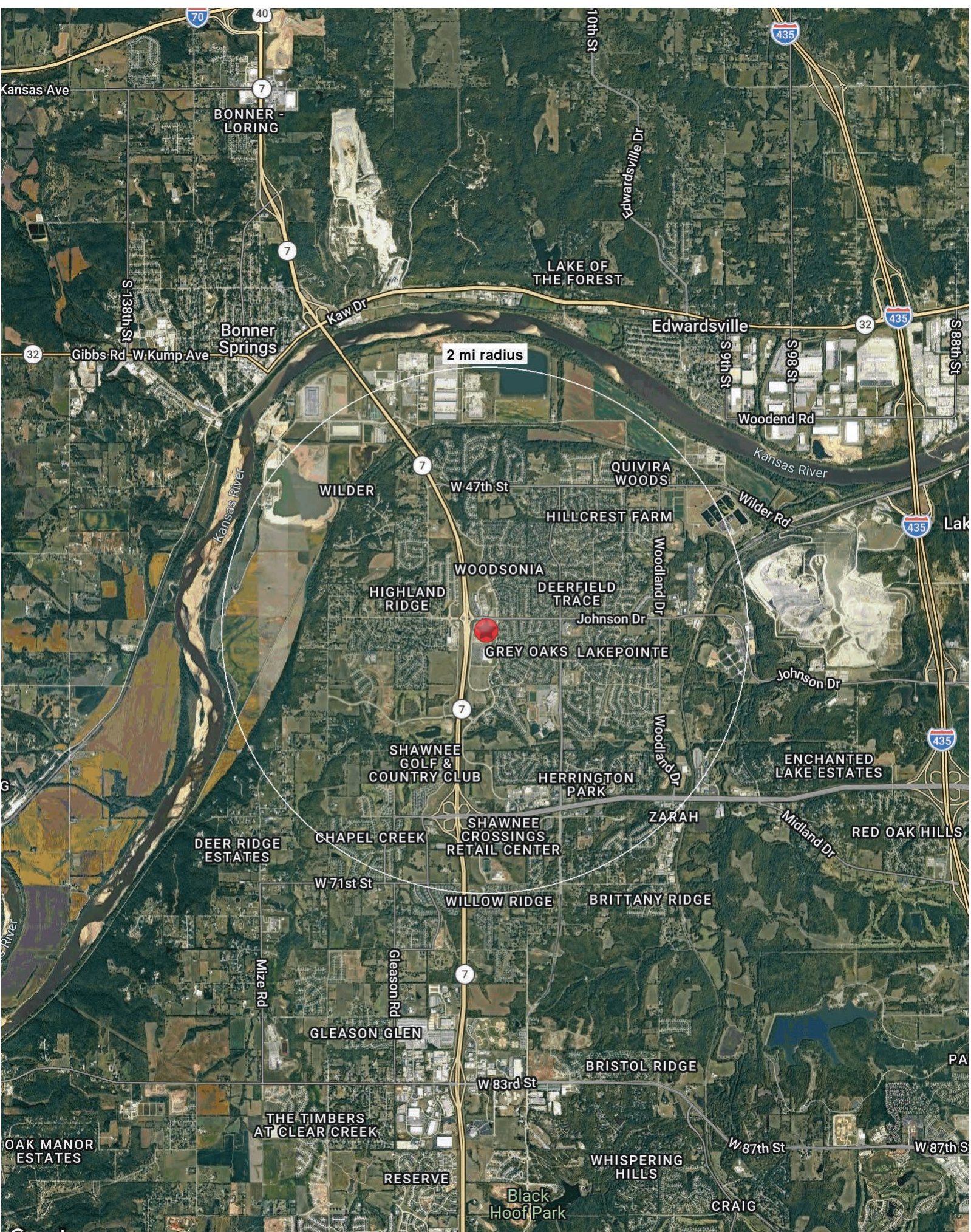


Lat/Lon: 39.0277/-94.8501

Hwy K-7 & Johnson Drive		2 mi
Shawnee, KS 66226		radius
Population		
2025 Estimated Population		22,842
2030 Projected Population		22,846
2020 Census Population		22,517
2010 Census Population		19,248
Projected Annual Growth 2025 to 2030		-
Historical Annual Growth 2010 to 2025		1.2%
2025 Median Age		36.8
Households		
2025 Estimated Households		7,582
2030 Projected Households		7,772
2020 Census Households		7,185
2010 Census Households		6,091
Projected Annual Growth 2025 to 2030		0.5%
Historical Annual Growth 2010 to 2025		1.6%
Race and Ethnicity		
2025 Estimated White		83.9%
2025 Estimated Black or African American		4.9%
2025 Estimated Asian or Pacific Islander		3.9%
2025 Estimated American Indian or Native Alaskan		0.3%
2025 Estimated Other Races		7.0%
2025 Estimated Hispanic		7.1%
Income		
2025 Estimated Average Household Income		\$176,992
2025 Estimated Median Household Income		\$149,188
2025 Estimated Per Capita Income		\$58,749
Education (Age 25+)		
2025 Estimated Elementary (Grade Level 0 to 8)		0.8%
2025 Estimated Some High School (Grade Level 9 to 11)		1.5%
2025 Estimated High School Graduate		10.5%
2025 Estimated Some College		15.2%
2025 Estimated Associates Degree Only		9.7%
2025 Estimated Bachelors Degree Only		39.3%
2025 Estimated Graduate Degree		23.0%
Business		
2025 Estimated Total Businesses		461
2025 Estimated Total Employees		4,177
2025 Estimated Employee Population per Business		9.1
2025 Estimated Residential Population per Business		49.6

©2026, Sites USA, Chandler, Arizona, 480-491-1112 Demographic Source: Applied Geographic Solutions 11/2025, TIGER Geography - RS1

This report was produced using data from private and government sources deemed to be reliable. The information herein is provided without representation or warranty.



BONNER - LORING

Bonner Springs

2 mi radius

LAKE OF THE FOREST

Edwardsville

WILDER

QUIVIRA WOODS

HIGHLAND RIDGE

HILLCREST FARM

WOODSONIA

DEERFIELD TRACE

GREY OAKS LAKEPONTE

SHAWNEE GOLF & COUNTRY CLUB

HERRINGTON PARK

ENCHANTED LAKE ESTATES

DEER RIDGE ESTATES

CHAPEL CREEK

SHAWNEE CROSSINGS RETAIL CENTER

ZARAH

RED OAK HILLS

GLEASON GLEN

WILLOW RIDGE

BRITTANY RIDGE

OAK MANOR ESTATES

THE TIMBERS AT CLEAR CREEK

RESERVE

BRISTOL RIDGE

WHISPERING HILLS

Black Hoof Park

CRAIG