

FOR LEASE

135th & Blackbob
Olathe, Kansas



SITE SUMMARY

- 3,062 SF Available
- Great Infill Location
- Walmart Outlot
- Outstanding Traffic and Exposure



Bob Johnson

bjohnson@rhjohnson.com | 816.268.2450

Bryan Jantsch

bjantsch@rhjohnson.com | 816.268.2455

4520 Madison Avenue, Suite 300 • Kansas City, MO 64111 • 816.561.5551 • rhjohnson.com

While this information is deemed correct, no representation is made as to the accuracy thereof. This information is subject to errors, omissions and change of terms at any time. The property may be withdrawn from the market without notice.

AERIAL VIEW



26,743 VPD

135TH STREET

First National Bank

Pickleman's

Wendy's

TIRE PLUS

METCALF DISCOUNT LIQUOR

HCA MIDWEST HEALTH

Academy

MENARDS

HOBBY LOBBY

HEALTH GENESIS CLUBS

Walmart

3,062 SF AVAILABLE

Great Clips

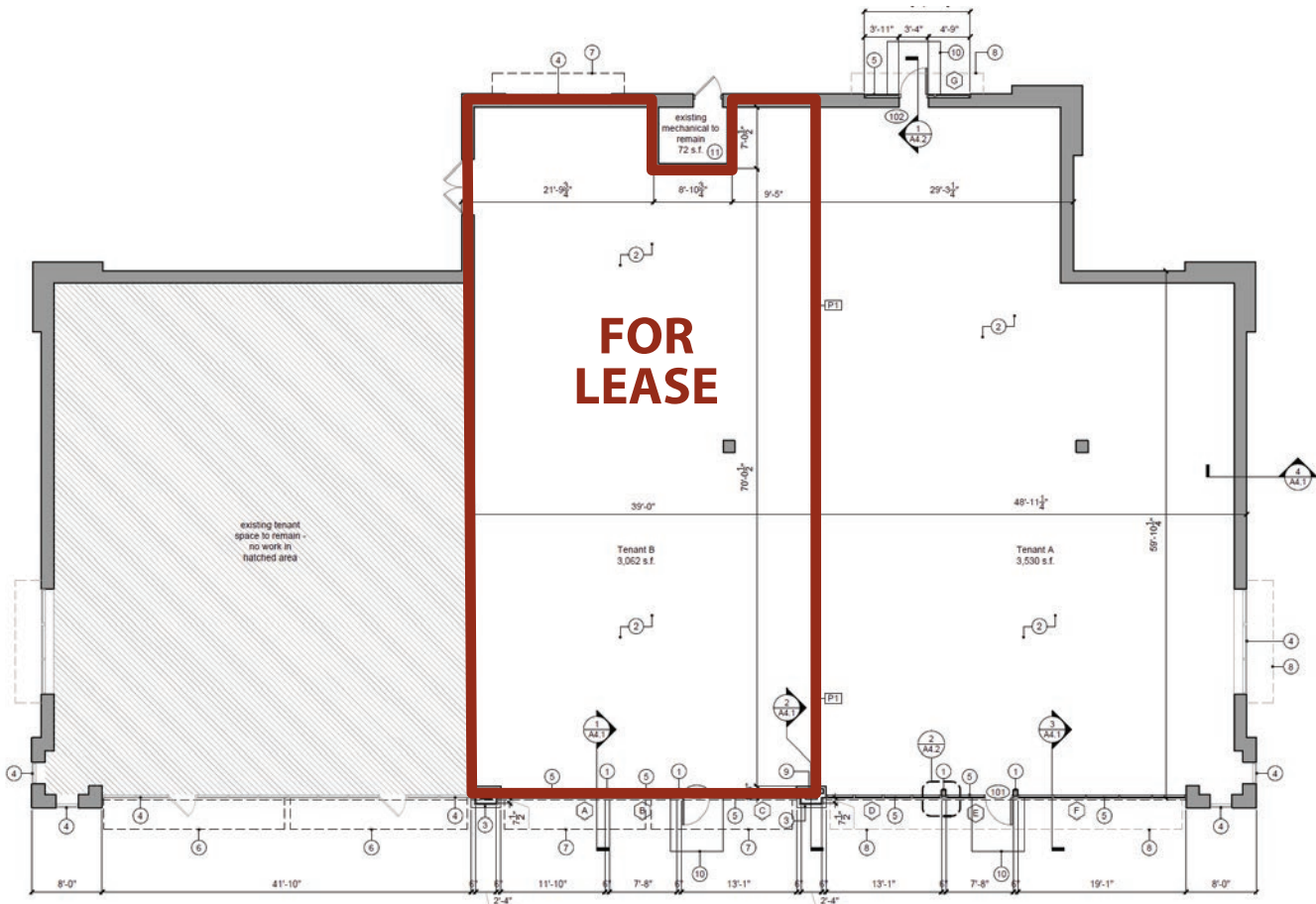
at&t

AspenDental

BLACKBOB ROAD

22,688 VPD







COMING SOON

MENARDS

Academy

HOBBY LOBBY

HEALTH GENESIS CLUB

Walmart

3,062 SF AVAILABLE

Great Clips

AspenDental

at&t

First National Bank

Nickman's

Wendy's

TIRE PLUS

METCALF DISCOUNT LIQUOR

HCA MIDWEST HEALTH

Firestone

135TH STREET

26,743 VPD

BLACKBOB ROAD

22,688 VPD

Summary Profile

2010-2020 Census, 2023 Estimates with 2028 Projections
 Calculated using Weighted Block Centroid from Block Groups



Lat/Lon: 38.8835/-94.7609

W 135th St & S Blackbob Rd	1 mi radius	3 mi radius	5 mi radius
Population			
2023 Estimated Population	10,785	107,701	222,287
2028 Projected Population	10,731	111,909	236,093
2020 Census Population	11,019	106,982	217,182
2010 Census Population	10,211	99,388	192,557
Projected Annual Growth 2023 to 2028	-	0.8%	1.2%
Historical Annual Growth 2010 to 2023	0.4%	0.6%	1.2%
2023 Median Age	35.3	35.5	36.4
Households			
2023 Estimated Households	3,893	40,048	84,914
2028 Projected Households	3,877	41,711	90,569
2020 Census Households	3,918	39,115	80,694
2010 Census Households	3,628	36,055	71,178
Projected Annual Growth 2023 to 2028	-	0.8%	1.3%
Historical Annual Growth 2010 to 2023	0.6%	0.9%	1.5%
Race and Ethnicity			
2023 Estimated White	77.0%	75.9%	77.0%
2023 Estimated Black or African American	7.1%	6.5%	5.9%
2023 Estimated Asian or Pacific Islander	7.3%	6.7%	7.3%
2023 Estimated American Indian or Native Alaskan	0.3%	0.4%	0.3%
2023 Estimated Other Races	8.3%	10.6%	9.5%
2023 Estimated Hispanic	8.0%	10.8%	9.6%
Income			
2023 Estimated Average Household Income	\$148,093	\$138,640	\$146,667
2023 Estimated Median Household Income	\$114,109	\$110,708	\$120,350
2023 Estimated Per Capita Income	\$53,486	\$51,635	\$56,117
Education (Age 25+)			
2023 Estimated Elementary (Grade Level 0 to 8)	0.6%	2.1%	1.9%
2023 Estimated Some High School (Grade Level 9 to 11)	1.5%	2.5%	2.4%
2023 Estimated High School Graduate	13.9%	14.2%	12.8%
2023 Estimated Some College	22.3%	18.7%	17.3%
2023 Estimated Associates Degree Only	6.9%	6.9%	7.0%
2023 Estimated Bachelors Degree Only	39.0%	34.9%	35.5%
2023 Estimated Graduate Degree	15.8%	20.6%	23.0%
Business			
2023 Estimated Total Businesses	360	2,905	7,695
2023 Estimated Total Employees	3,744	40,441	127,228
2023 Estimated Employee Population per Business	10.4	13.9	16.5
2023 Estimated Residential Population per Business	29.9	37.1	28.9

©2024, Sites USA, Chandler, Arizona, 480-491-1112 Demographic Source: Applied Geographic Solutions 11/2023, TIGER Geography - RS1

This report was produced using data from private and government sources deemed to be reliable. The information herein is provided without representation or warranty.

