

# MEADOWBROOK OFFICE BUILDING



## ALL NEW - AVAILABLE FOR LEASE



- Complete mixed-use redevelopment.
- All new roof, windows, parking, common areas.
- 2,846 and 2,896 rentable square feet available.
- 49,000 square foot three-story office building.
- Walk-out balconies and furnished courtyard with canopy lighting.
- Highly visible signage available.
- Adjacent to 150+ acre Meadowbrook Park Redevelopment.
- Walkable to retail/restaurant amenities, Meadowbrook Inn.
- 2024 lease rate: \$33.50 per square foot full service.

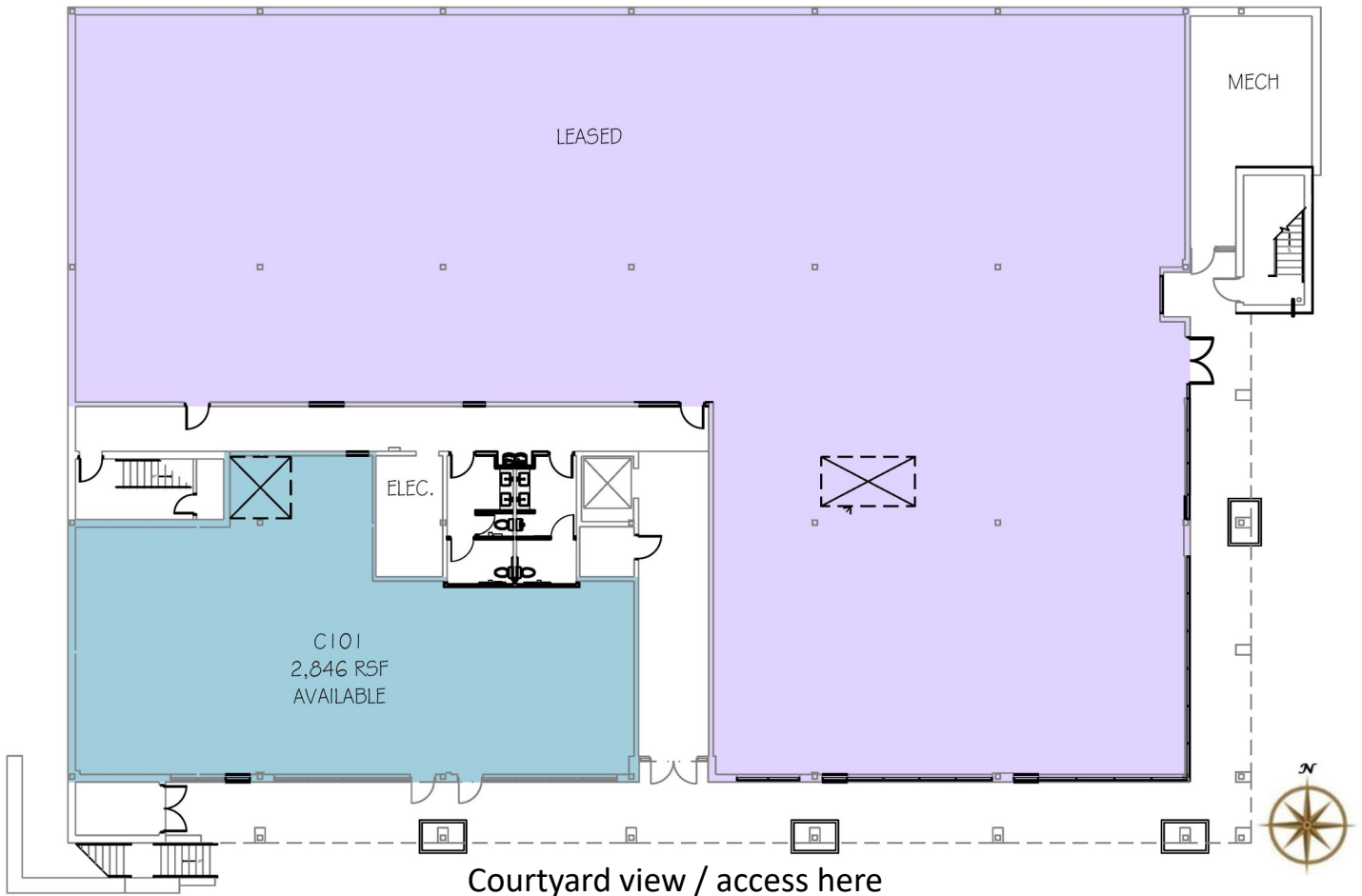
MEADOWBROOK OFFICE BUILDING  
9415 NALL AVENUE  
PRAIRIE VILLAGE, KS 66207



Chuck Connealy, SIOR, CCIM  
Direct: (913) 789-9020  
Cell: (913) 515-6616  
[chuck.connealy@waterfordproperty.net](mailto:chuck.connealy@waterfordproperty.net)  
Bob Cattanach  
Cell: (913) 219-2109  
[bob.cattanach@waterfordproperty.net](mailto:bob.cattanach@waterfordproperty.net)

# AVAILABLE SPACE

1st Floor



MEADOWBROOK OFFICE BUILDING  
9415 NALL AVENUE  
PRAIRIE VILLAGE, KS 66207



Chuck Connealy, SIOR, CCIM  
Direct: (913) 789-9020  
Cell: (913) 515-6616  
[chuck.connealy@waterfordproperty.net](mailto:chuck.connealy@waterfordproperty.net)  
Bob Cattanach  
Cell: (913) 219-2109  
[bob.cattanach@waterfordproperty.net](mailto:bob.cattanach@waterfordproperty.net)

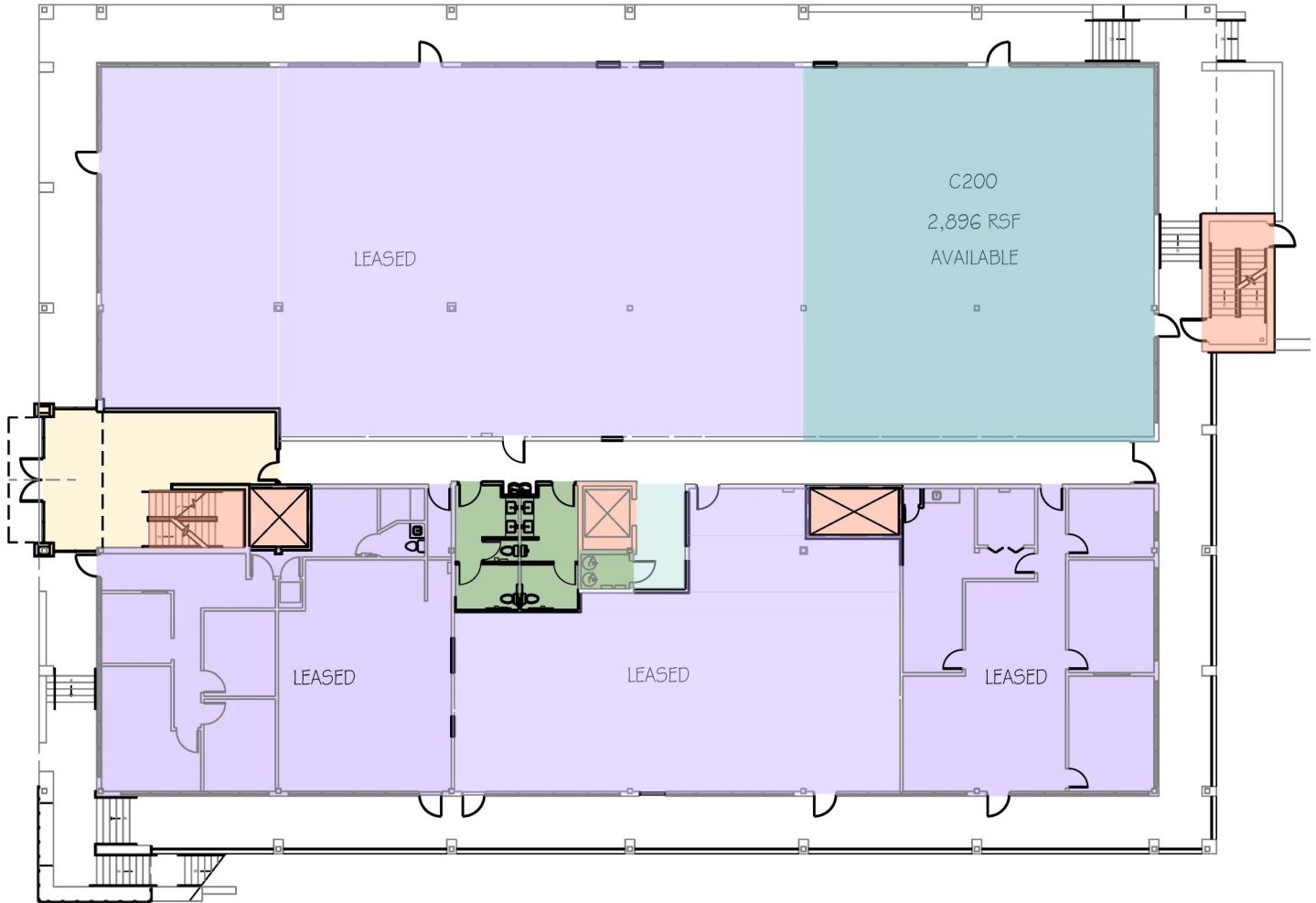
Information furnished regarding property is from sources deemed reliable but no warranty or representation is made as to the accuracy thereof and same is submitted subject to errors, omissions, prior sale or lease or withdrawal, without notice.



# AVAILABLE SPACE

## 2nd Floor

On-grade parking level; private entry available.



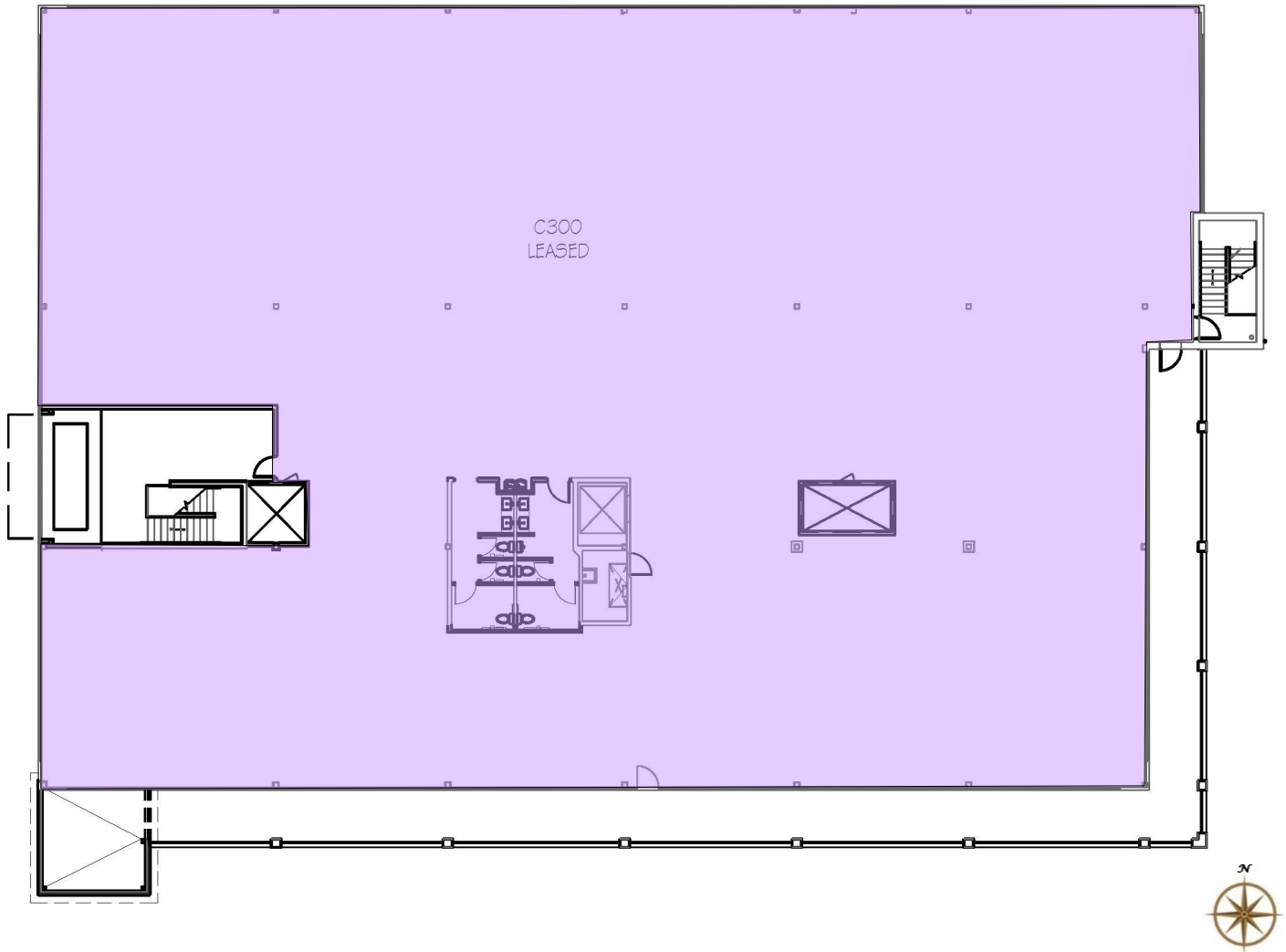
MEADOWBROOK OFFICE BUILDING  
9415 NALL AVENUE  
PRAIRIE VILLAGE, KS 66207



Chuck Connealy, SIOR, CCIM  
Direct: (913) 789-9020  
Cell: (913) 515-6616  
[chuck.connealy@waterfordproperty.net](mailto:chuck.connealy@waterfordproperty.net)  
Bob Cattanach  
Cell: (913) 219-2109  
[bob.cattanach@waterfordproperty.net](mailto:bob.cattanach@waterfordproperty.net)

# AVAILABLE SPACE

3rd Floor



MEADOWBROOK OFFICE BUILDING  
9415 NALL AVENUE  
PRAIRIE VILLAGE, KS 66207



Chuck Connealy, SIOR, CCIM  
Direct: (913) 789-9020  
Cell: (913) 515-6616  
[chuck.connealy@waterfordproperty.net](mailto:chuck.connealy@waterfordproperty.net)  
Bob Cattanach  
Cell: (913) 219-2109  
[bob.cattanach@waterfordproperty.net](mailto:bob.cattanach@waterfordproperty.net)



# SITE PLAN



MEADOWBROOK OFFICE BUILDING  
9415 NALL AVENUE  
PRAIRIE VILLAGE, KS 66207



Chuck Connealy, SIOR, CCIM  
Direct: (913) 789-9020  
Cell: (913) 515-6616  
[chuck.connealy@waterfordproperty.net](mailto:chuck.connealy@waterfordproperty.net)  
Bob Cattanach  
Cell: (913) 219-2109  
[bob.cattanach@waterfordproperty.net](mailto:bob.cattanach@waterfordproperty.net)



# BUILDING PHOTOS



MEADOWBROOK OFFICE BUILDING  
9415 NALL AVENUE  
PRAIRIE VILLAGE, KS 66207



Chuck Connealy, SIOR, CCIM  
Direct: (913) 789-9020  
Cell: (913) 515-6616  
[chuck.connealy@waterfordproperty.net](mailto:chuck.connealy@waterfordproperty.net)  
Bob Cattanach  
Cell: (913) 219-2109  
[bob.cattanach@waterfordproperty.net](mailto:bob.cattanach@waterfordproperty.net)



# MEADOWBROOK AREA AMENITIES



MEADOWBROOK OFFICE BUILDING  
9415 NALL AVENUE  
PRAIRIE VILLAGE, KS 66207



Chuck Connealy, SIOR, CCIM  
Direct: (913) 789-9020  
Cell: (913) 515-6616  
[chuck.connealy@waterfordproperty.net](mailto:chuck.connealy@waterfordproperty.net)  
Bob Cattanach  
Cell: (913) 219-2109  
[bob.cattanach@waterfordproperty.net](mailto:bob.cattanach@waterfordproperty.net)

Information furnished regarding property is from sources deemed reliable but no warranty or representation is made as to the accuracy thereof and same is submitted subject to errors, omissions, prior sale or lease or withdrawal, without notice.



# MEADOWBROOK AREA AMENITIES



MEADOWBROOK OFFICE BUILDING  
9415 NALL AVENUE  
PRAIRIE VILLAGE, KS 66207



Chuck Connealy, SIOR, CCIM  
Direct: (913) 789-9020  
Cell: (913) 515-6616  
[chuck.connealy@waterfordproperty.net](mailto:chuck.connealy@waterfordproperty.net)

Bob Cattanch  
Cell: (913) 219-2109  
[bob.cattanch@waterfordproperty.net](mailto:bob.cattanch@waterfordproperty.net)

Information furnished regarding property is from sources deemed reliable but no warranty or representation is made as to the accuracy thereof and same is submitted subject to errors, omissions, prior sale or lease or withdrawal, without notice.