

LAND FOR SALE

I-70 & 18th Street
Kansas City, Kansas



SITE SUMMARY

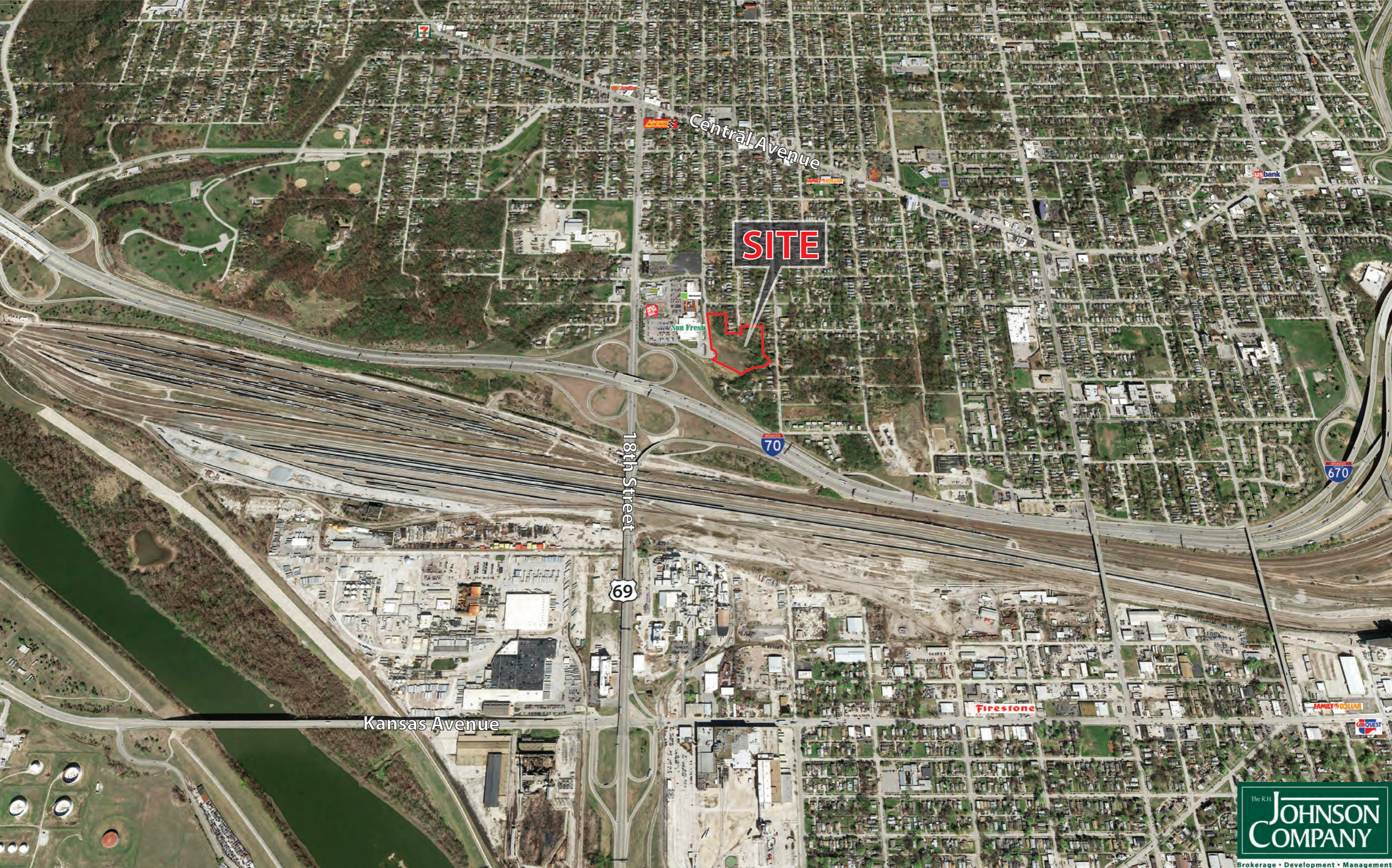
- 5± Acres For Sale
- \$350,000 Sales Price
- Great for Warehouse or Apartments
- Great Visibility



Cas Patykiewicz
cpatykiewicz@rhjohnson.com | 816.268.2468

4520 Madison Avenue, Suite 300 • Kansas City, MO 64111 • 816.561.5111 • rhjohnson.com

While this information is deemed correct, no representation is made as to the accuracy thereof. This information is subject to errors, omissions and change of terms at any time. The property may be withdrawn from the market without notice.



SITE

Central Avenue

18th Street

Kansas Avenue

69

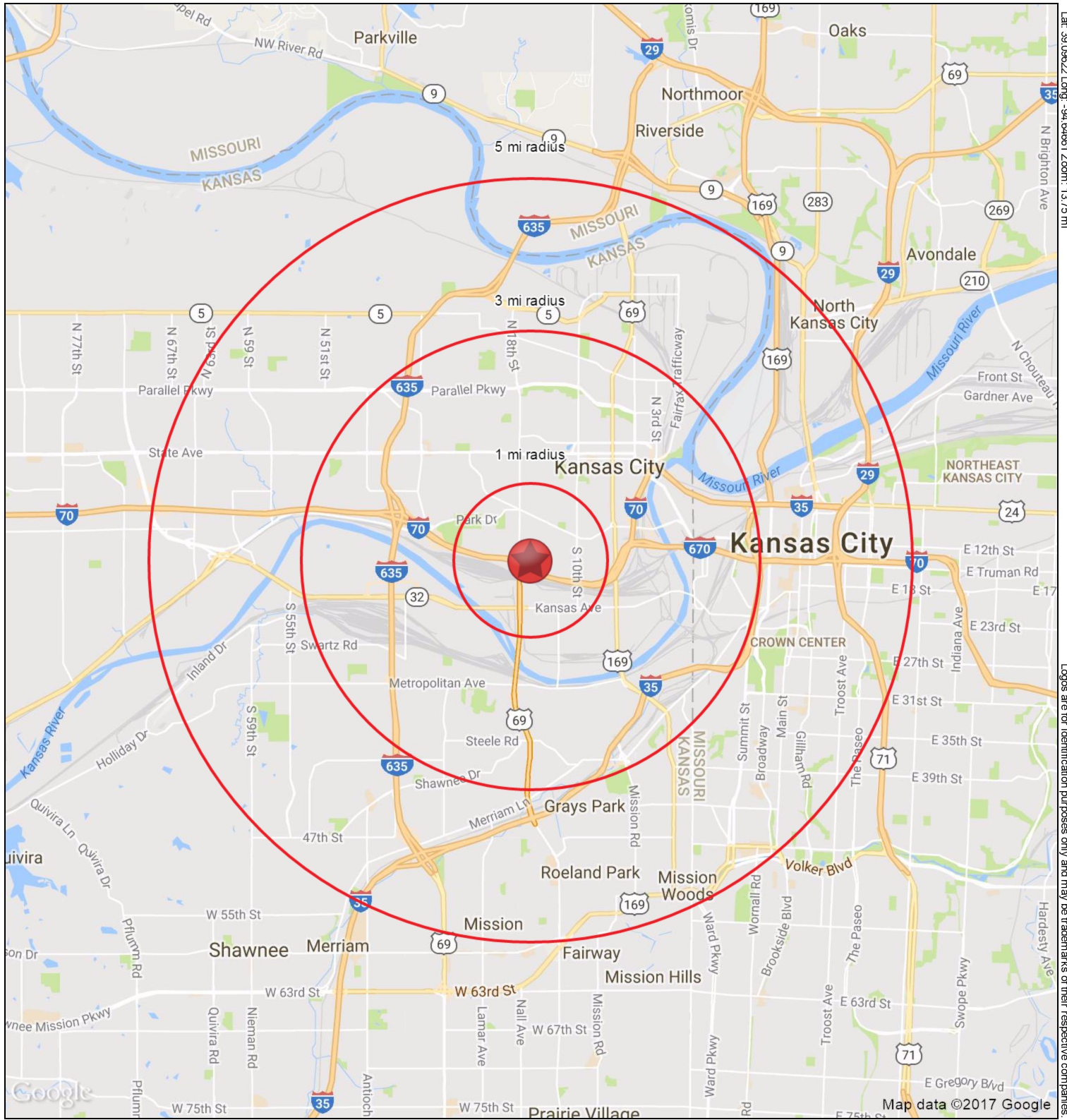
70

670

The R.H. **JOHNSON COMPANY**

Brokerage • Development • Management

A MEMBER OF **CHAINLINKS**
RETAIL ADVISORS



Lat: 39.09822 Long: -94.64661 Zoom: 13.75 mi

Logos are for identification purposes only and may be trademarks of their respective companies.

I-70 & 18th Street
Kansas City, KS 66102

January 2017



This map was produced using data from private and government sources deemed to be reliable. The information herein is provided without representation or warranty

SUMMARY PROFILE

2000-2010 Census, 2016 Estimates with 2021 Projections

Calculated using Weighted Block Centroid from Block Groups



Lat/Lon: 39.0963/-94.6466

RS1

I-70 & 18th Street		1 mi radius	3 mi radius	5 mi radius
Kansas City, KS 66102				
POPULATION	2016 Estimated Population	14,287	68,719	185,941
	2021 Projected Population	15,295	72,551	195,708
	2010 Census Population	13,653	65,311	177,859
	2000 Census Population	13,682	68,840	183,748
	Projected Annual Growth 2016 to 2021	1.4%	1.1%	1.1%
	Historical Annual Growth 2000 to 2016	0.3%	-	0.1%
	2016 Median Age	28.5	30.7	32.5
HOUSEHOLDS	2016 Estimated Households	4,332	24,424	81,442
	2021 Projected Households	4,630	25,761	86,268
	2010 Census Households	4,087	22,800	75,862
	2000 Census Households	4,510	24,982	78,240
	Projected Annual Growth 2016 to 2021	1.4%	1.1%	1.2%
	Historical Annual Growth 2000 to 2016	-0.2%	-0.1%	0.3%
RACE AND ETHNICITY	2016 Estimated White	50.7%	43.4%	54.7%
	2016 Estimated Black or African American	7.0%	25.2%	24.2%
	2016 Estimated Asian or Pacific Islander	7.2%	4.9%	4.4%
	2016 Estimated American Indian or Native Alaskan	1.2%	0.9%	0.7%
	2016 Estimated Other Races	33.9%	25.5%	15.9%
	2016 Estimated Hispanic	62.3%	43.4%	25.5%
INCOME	2016 Estimated Average Household Income	\$38,231	\$38,770	\$54,170
	2016 Estimated Median Household Income	\$31,611	\$32,248	\$43,216
	2016 Estimated Per Capita Income	\$11,631	\$13,902	\$23,983
EDUCATION (AGE 25+)	2016 Estimated Elementary (Grade Level 0 to 8)	21.9%	16.6%	8.5%
	2016 Estimated Some High School (Grade Level 9 to 11)	19.3%	15.0%	10.1%
	2016 Estimated High School Graduate	31.0%	32.0%	26.0%
	2016 Estimated Some College	12.4%	17.8%	21.1%
	2016 Estimated Associates Degree Only	6.0%	6.4%	6.3%
	2016 Estimated Bachelors Degree Only	6.1%	7.8%	17.6%
	2016 Estimated Graduate Degree	3.4%	4.4%	10.5%
BUSINESS	2016 Estimated Total Businesses	382	2,654	12,989
	2016 Estimated Total Employees	3,597	39,577	251,780
	2016 Estimated Employee Population per Business	9.4	14.9	19.4
	2016 Estimated Residential Population per Business	37.4	25.9	14.3

This report was produced using data from private and government sources deemed to be reliable. The information herein is provided without representation or warranty.